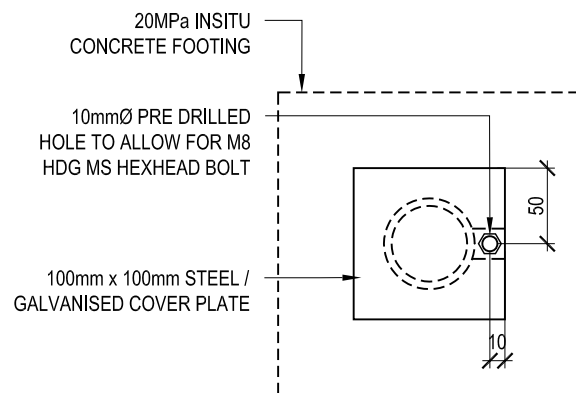
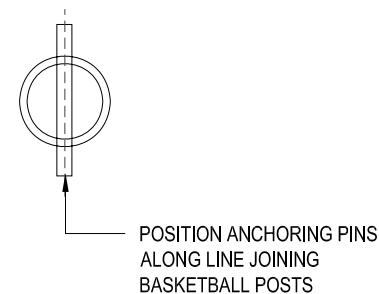


1 PIPE SOCKET & COVER IN SEALED COURT
SECTION
Scale 1:5



2 PIPE SOCKET & COVER IN CONCRETE COURT
SECTION
Scale 1:5

3 PLAN SHOWING SOCKET COVER IN CONCRETE SURROUND
PLAN
Scale 1:5



4 ANCHOR PIN DETAIL
PLAN
Scale 1:5

NOTES

GENERAL

INSTALLATION OF THESE POSTS IS TO BE READ IN CONJUNCTION WITH SPECIFICATION.

CONCRETE

■ ALL CONCRETE TO HAVE MINIMUM STRENGTH OF 20MPa.

FIXINGS

■ ALL STEELWORK INCLUDING FIXINGS TO BE 316 STAINLESS STEEL WITHIN A COASTAL ENVIRONMENT. FIXINGS TO USE NON FERROUS WASHERS (E.G. NYLON) TO PREVENT ELECTROLYSIS.

SOCKET FOR:

■ 'B' TYPE NETBALL POST 50NB X 450mm LONG GALV. PIPE.
■ 'D' TYPE SKILLS SET POST 50NB X 300mm LONG GALV. PIPE.

TYPICAL USES

■ TENNIS AND NETBALL COURTS